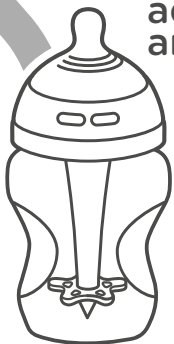


tommee
tippee

advanced
anti+colic™



When self-sterilising, loosely place the assembled hood on the bottle before microwaving. Do not tighten to allow pressure release.

0m+

slow
flow
①

3m+

med
flow
②

6m+

fast
flow
③

We offer different flow rates to keep up with your growing baby.
Every baby is unique so this is just a guide.

Mayborn (UK) Limited

Balliol Business Park, Newcastle Upon Tyne, NE12 8EW, UK.

EU Representative

Mayborn France Sarl, 56 Rue de Paris,
Boulogne Billancourt, 92100, France.

All IP rights held by Mayborn (UK) Limited.
TOMMEE TIPPEE®, ADVANCED ANTI-COLIC™.
Copyright © 2024.

Patented:

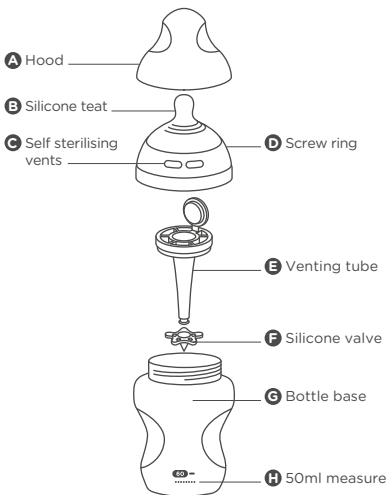
<https://www.tommeeippee.com/en-us/legals/patent>

042274402 P2



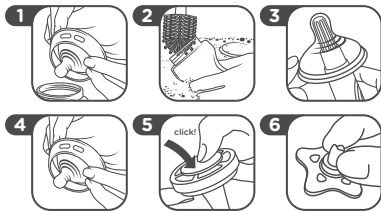
Any questions? Visit our website:

[tommeeippee.com](https://www.tommeeippee.com)



CLEANING, STERILISING AND ASSEMBLY

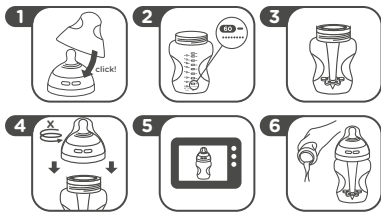
Before first use disassemble and place all components in boiling water for 5 minutes. This is to ensure hygiene.



1. Disassemble your bottle.
2. Wash all parts in warm soapy water and rinse or use a dishwasher (top shelf only).
Ensure the lid of the venting tube is open.
3. Use a teat brush to gently clean the teat **B**, do not turn inside out as you may damage it.
4. Reassemble the teat **B** and screw ring **D** and then place all parts in boiling water for 5 minutes or use another method of sterilisation such as a UV or steam steriliser or cold water tablet/liquid solution
(ensure you follow the manufacturer's instructions).
5. After sterilising reassemble your bottle as per the diagram ready for use. When assembling your bottle it is important that you check the lid of the venting tube **E** is fully closed. You can do this by pressing the centre of the lid with your thumb.
6. To prevent the teat **B** from collapsing, check that the slit in the silicone valve **F** has not sealed. If it has sealed pinch it gently between your fingers to ensure it's open.

SELF-STERILISING IN A MICROWAVE

This method allows you to easily sterilise bottles using a microwave. Before self-sterilising, always disassemble and wash all components thoroughly and rinse in clear water or use dishwasher (top shelf only).



1. Assemble the teat **B** in the screw ring **D** and click the bottle hood **A** in place.
2. Pour exactly 50ml of water into the bottle base **G**. The bottles have a 50ml measure **H**.
3. Assemble the venting tube **E** with the silicone valve **F**, and then place in the bottle base **G** as per the diagram.
Ensure the lid of the venting tube is fully closed. You can do this by pressing the centre of the lid with your thumb. Ensure the inside of the venting tube **E** is thoroughly washed and dried before self-sterilising.

4. Rest the assembled hood **A**, teat **B**, and screw ring **D** on top of the bottle base **G**. **Loosely place the assembled hood on the bottle before microwaving. Do not tighten to allow pressure release.**
5. Place in the microwave for 3 minutes.
To sterilise multiple bottles see table below.
Allow the bottles to cool down for at least 5 minutes before removing from microwave.
For glass bottles allow 30 minutes to cool down with the microwave door open.
6. Pour out residual water and screw the assembled hood **A**, teat **B**, and screw ring **D** on to the bottle base **G** ready for use. **Ensure the lid of the venting tube **E** is closed.**
After the self-sterilisation the bottle and teat will remain sterile for 24 hours if the bottle is unopened and fully assembled.
Always store the bottles fully assembled.
7. To prevent the teat **B** from collapsing, check that the slit in the silicone valve **F** has not sealed. If it has sealed pinch it gently between your fingers to ensure it's open.
Microwave recommended times for all bottle sizes. Based on microwaves from 700 to 1000 Watts.

Number of bottles	1	2	3	4	5
Sterilising time (min)	3	4	5	6	7.5

STORAGE AND USE

- Inspect before each use and pull the feeding teat in all directions.
- Always clean and sterilise before each use.
- Keep away from solvents or harsh chemicals.
- Do not allow the product to come into contact with oil based foods.
- Not suitable for use in a conventional oven or a combination microwave oven with the grill feature switched on.
- Do not leave a feeding teat in direct sunlight or heat, or leave in disinfectant ("sterilising solution") for longer than recommended, as this may weaken the teat.
- Teats are recommended to be replaced at least every 2 months for safety and hygiene reasons.
- Please dispose of this product and packaging responsibly.

FOR YOUR CHILD'S SAFETY AND HEALTH**WARNING!**

- Always use this product with adult supervision. Accidents have occurred when babies have been left alone with drinking equipment due to the baby falling or if the product has disassembled.
- Never use feeding teats as a soother.
- Continuous and prolonged sucking of fluids will cause tooth decay. Tooth decay in young children can occur even when non-sweetened fluids are used. This can occur if the baby is allowed to use the bottle for long periods through the day and particularly through the night, when saliva flow is reduced or if it is used as a soother.
- Always check food temperature before feeding. Heating in microwave oven may produce localized high temperatures. Take extra care when microwave heating. Always stir heated food to ensure even heat distribution and test the temperature before serving.
- Throw away at the first signs of damage or weakness.
- Keep components not in use out of the reach of children.
- Never attach to cords, ribbons, laces or loose parts of clothing. The child can be strangled.
- Glass bottles may break.
- **Caution: Loosely place the assembled hood on the bottle before microwaving. Do not tighten to allow pressure release. Do not heat in a microwave with the bottle sealed.**
- When making up feed, follow the formula milk manufacturer's instructions.
- The bottle hood can pose a suffocation hazard - keep out of reach of children.